



twomeyhomes

Opening the door to a *Better* home

Kalisma Pty Ltd CDB-U 54160.

HOUSE AND

**\$854,832
PACKAGE**

Kalisma Pty Ltd CDB-U 54160.

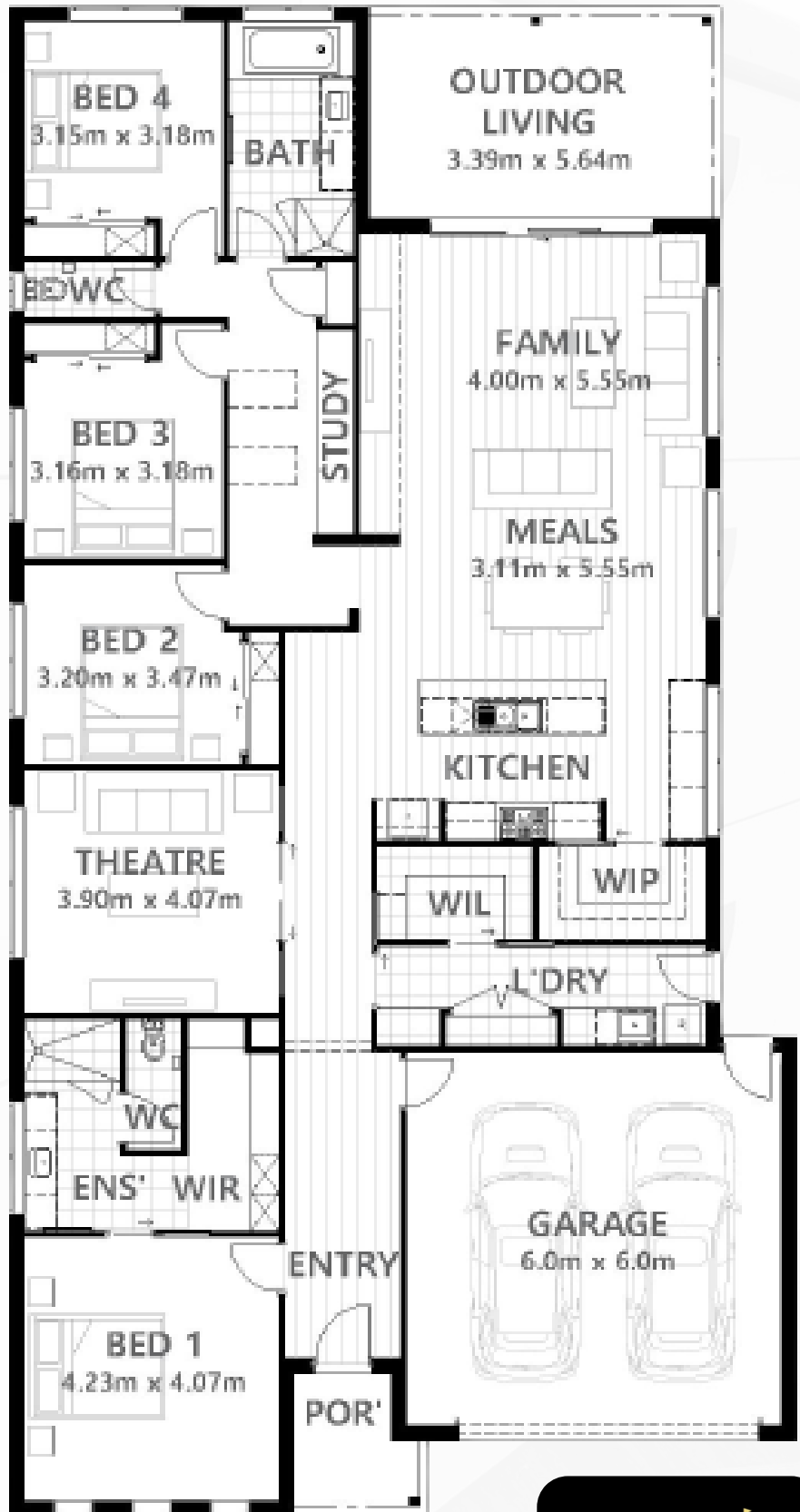
**LOT320 DIVOT CIRCUIT
+ BARWON WITH
DISPLAY HOME
OPTIONS**

- **4 Bedrooms**
- **2 Living Rooms**
- **Double Garage**
- **2 Bathroom**
- **PLUS Study**

Barwon 277 – 14B

Our Barwon home has been specifically adapted to perfectly fit on a 14m wide block, and I must say, it looks absolutely stunning. The layout, design, and overall functionality of the home all work seamlessly together.

We're eager for you to join us on this exciting project and witness the magic of living in a home that has been tailor-made for Drew's Paddock.



*Images are for illustrative purposes only and may not represent the final product. House and Land Packages are based on land price & availability and are subject to developer's final approval. Twomey Homes reserves the right to alter any package price without notice. Further terms and conditions apply. Kalisma Pty Ltd CDB-U 54160.



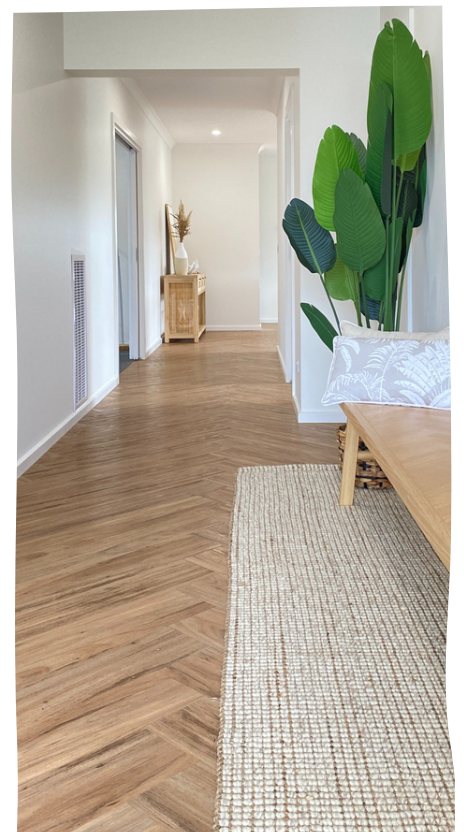


DISPLAY HOME INCLUDED UPGRADES



- Lonsdale Facade
- Herringbone Lay Vinyl floor
- Brushed Brass Tapware
- Evaporative Cooler
- Corinthian DECO 4S internal doors
- Servery bench with pot drawers and overheads
- 4.7 Star Gas ducted heating with 3 switchable zones
- 1000mm deep Island bench
- Alfresco 'Stacker' Door to O/L
- Corinthian AWOWS 2040x1020 Entry Door & Lockwood Paradigm deadlatch
- Bathroom Insitu Shower base and Niche

Kalisma Pty Ltd CDB-U 54160.



EXPERIENCE LUXURY WITH OUR EXCEPTIONAL INCLUSIONS

- Double Glazed Windows and Doors
- Oversized Laundry with drying cupboard
- 2550mm high ceilings
- 12 LED Downlights, 3 DBL Power Points to Bed1, Theatre & Family Rooms, 2 DBL Power points to other bedrooms
- 900mm Westinghouse Appliances
 - Including dishwasher
- Stone to Kitchen, Island AND Served benchtops
- Exceptional amount of storage
- Grand Entrance hallway
- 450mm eaves with roof ventilation
- 3,000lt rainwater tank
- Driveway & Crossover completed
- Soft Close Joinery throughout
- Overhead cupboards to Kitchen including over fridge
- Brick Infills above all windows and doors

PLUS so much more

Kalisma Pty Ltd CDB-U 54160.



EXCLUSIVE OFFER FROM TWOOMEY HOMES & DREW'S PADDOCK

\$854,832

LOT 320 DIVOT CIRCUIT

HOUSE AND LAND
FIXED CONTRACT*

03

CHOOSE FROM A
WORLD OF
COLOURS AND
FINISHES

01

LOCK IN YOUR DREAM
HOME WITH DISPLAY
HOME QUALITY OPTIONS
TODAY.

04

COMPLETE THE
CONTRACT AND
WAIT LAND
SETTLEMENT

02

\$2,000 HOUSE DEPOSIT
AND 10% LAND DEPOSIT
IS ALL YOU NEED TO GET
STARTED!

TERMS & CONDITIONS

Construction will begin once title is available.
*House and Land Packages are based on land price & availability and are subject to developer's final approval. *No allowances made for significant tree influence; * H1 class slab construction subject to engineers inspection and slab design - excludes fill, rock & removal & retaining walls. *Twomey Homes reserves the right to withdraw this offer at anytime.
Kalisma Pty Ltd CDB-U 54160.