



twomeyhomes

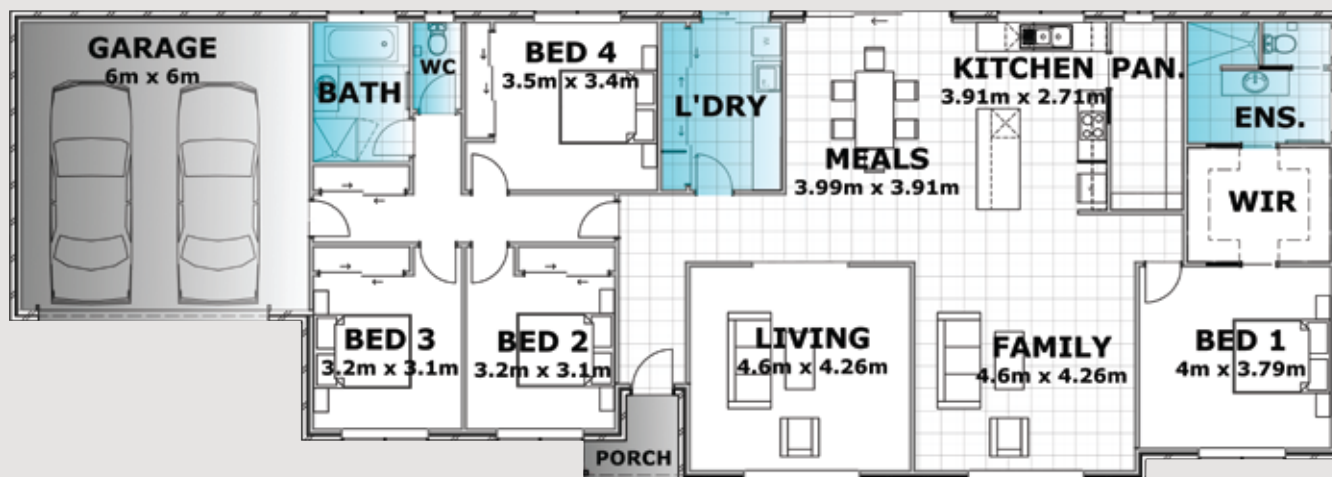
Opening the door to a *Better* home

Yarra 246



Artist's impression only

Optional façade: Zuma



Standard Specifications

Residence	202.74m ²	Total	245.87m ²
Porch	2.76m ²		26.44sq
Garage	40.37m ²		
		Width	27.81m
		Depth	10.33m



Homestead Range