



twomeyhomes
Opening the door to a *Better* home

house & land package

BARWON 277

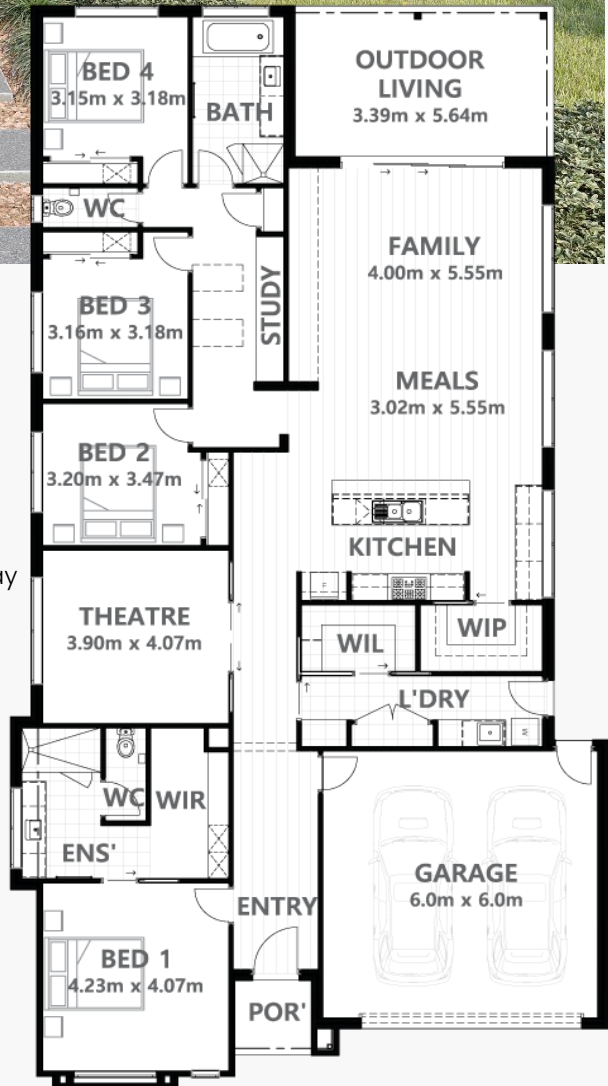
\$869,222.00

Lot 1900 Sullivan St, Lucas



AS DISPLAYED inclusions

- ✓ 2550mm (8ft 6in) high ceilings
- ✓ 40mm Stone to Kitchen
- ✓ 900mm Stainless Steel appliances
- ✓ Soft-Close Cabinetry
- ✓ Superior fixtures and fittings
- ✓ Colorbond Roof
- ✓ Driveway & Crossover (inc. permit)
- ✓ Quality Vinyl flooring
- ✓ 450mm Eaves to entire home
- ✓ Carpet with upgrade underlay
- ✓ Studio Two Selections Appointment
- ✓ Local Trades & Suppliers



Façade: Lonsdale

Size: 30sq 277.24m²

Land: 612m² \$400,000.

Range: Town

4	2	2	2

*Images are for illustrative purposes only and may not represent the final product. House and Land Packages are based on land price & availability and are subject to developer's final approval. Price does not include stamp duty, legal fees or customer account opening fees. Including Site Cost Contribution. Twomey Homes reserves the right to alter any package price without notice. Further terms and conditions apply. Kalisma Pty Ltd CDB-U 54160.